



**OD-BH BOLT HANGER /
OD-BH-D BOLT HANGER SET
User Guide**

Connect Line. Connect Life.

1. Product Usage Report

Serial Number :
Date of Production :
Date of Delivery :
Stamp & Signature :
.....
.....
.....
Date of first use :
Name & Surname of user :

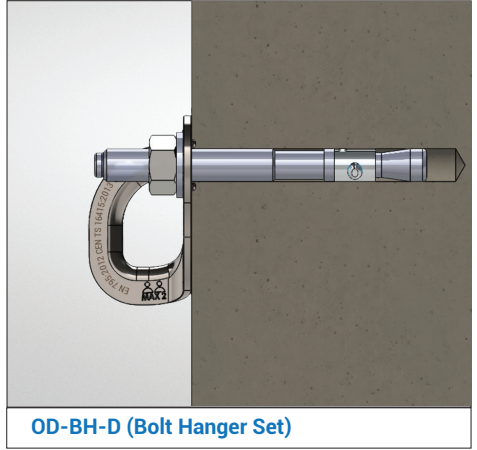
2. Annual Product Inspections

B.1	B.2 Inspection Date	B.3 Next Inspection Date	B.4 Inspected by
1			
2			
3			
4			
5			
6			
7			

3.
OD- BH BOLT HANGER
EN 795:2012 TYPE A ve CEN/TS 16415:2013 TYPE A



OD-BH (Bolt Hanger)



OD-BH-D (Bolt Hanger Set)

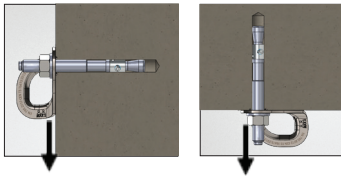
3.1 Area of Use

OD-BH and OD-BH-D were developed after long-term studies and experience and are designed for direct use with all carabiners, including scaffold-type carabiners. Thanks to the new form of the ear anchors, the cutting force from the carabiners have been reduced by an average of 75%.

With its special 3-point (⊗) fixing design, OD-BH (Bolt Hanger) eliminates the possibility of rotational movement that may change the working direction that may occur uncontrolled after installation. It was designed to create a fixed anchorage point by mounting on rock, concrete, and steel floors.

3.2 Features

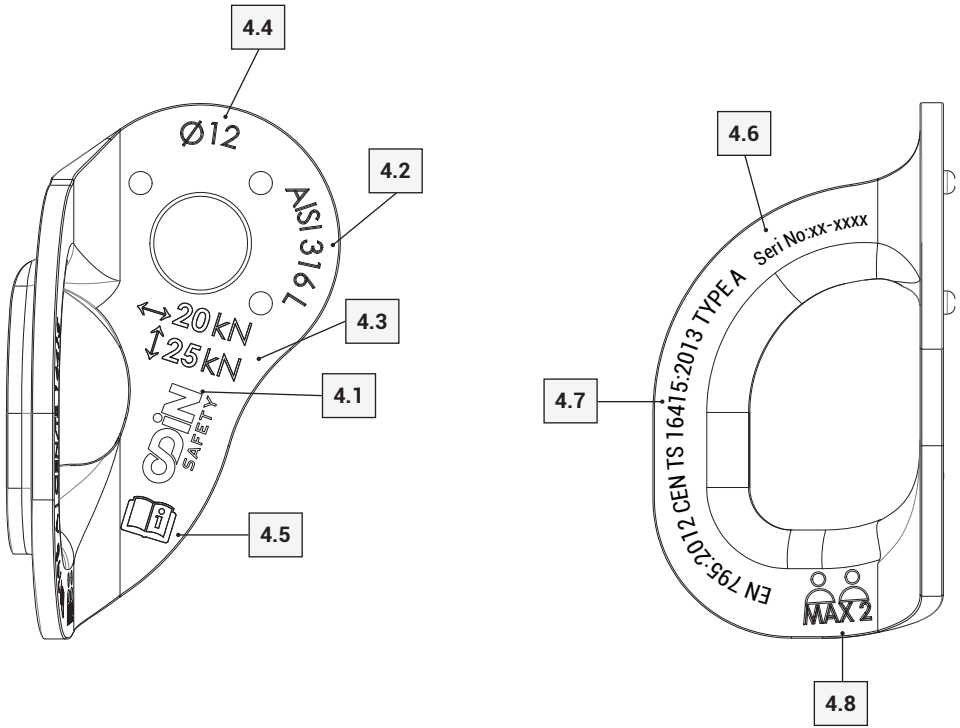
- » It is produced, tested, and certified by EN 795: 2012 TYPE A and CEN/TS 16415: 2013 TYPE A standards.
- » It is made of stainless steel.
- » It is suitable for 2 people to work at the same time.
- » Its axial direction strength is 25 kN; its shear directional strength is 20 kN.
- » It can be used in axial direction and overhead position.



- » OD-BH-D Bolt hanger set provides safe and easy installation with its special stainless steel bolt.

Certification	Max. Number of User
<div style="display: flex; justify-content: space-around;"> <div style="border: 1px solid gray; border-radius: 50%; padding: 10px; text-align: center;"> EN795:2012 TYPE A </div> <div style="border: 1px solid gray; border-radius: 50%; padding: 10px; text-align: center;"> CEN TS 16415:2013 TYPE A </div> </div>	<div style="border: 1px solid gray; border-radius: 50%; padding: 10px; text-align: center;"> 2 </div>

4.
Label



Code	Description	Code	Description
4.1	Producer	4.6	Serial No
4.2	Material	4.7	Standard
4.3	Strenght	4.8	Max. Number of Users
4.4	Diameter		
4.5	Read User Guide		

5.
Warning Label



ANKRAJLAR
ANCHORAGES



DİKKAT ! /ATTENTION !
YÜKSEKTE ÇALIŞMA BU NOKTADAN
İTİBAREN BAŞLAMAKTADIR.
WORKING AT HEIGHT



DÜŞÜŞ DURDURMA KEMERİ (EN361)
İLE BİRLİKTE ANKRAJ NOKTASI
OLARAK KULLANIN.
USE A FALL ARREST HARNESS (EN 361)

EN 795/A:2012 / CEN/TS 16415/A:2013

EN 795/B:2012 / CEN/TS 16415/B:2013



UYARI: SİSTEMİN PERİYODİK KONTROLÜ YILDA EN AZ BİR DEFA YAPILMALIDIR.
ATTENTION : ANCHORS must be checked by a qualified person at least once a year.

Ankraj / Anchorage	OD-EXT	OD-BH	OD-S6	OD-FLASH	OD-FQ	OD-RB44	
	<input type="checkbox"/>	<input type="checkbox"/>	<input type="checkbox"/>	<input type="checkbox"/>	<input type="checkbox"/>	<input type="checkbox"/>	<input type="checkbox"/>

Kurulum Tarihi / Installation Date

Kurulum Uzmanı / Installation By

Yetkili Kişi / Authorized Only

Maksimum Kullanıcı / Max. Users

Bir Sonraki Kontrol Tarihi

/ Next Control Date

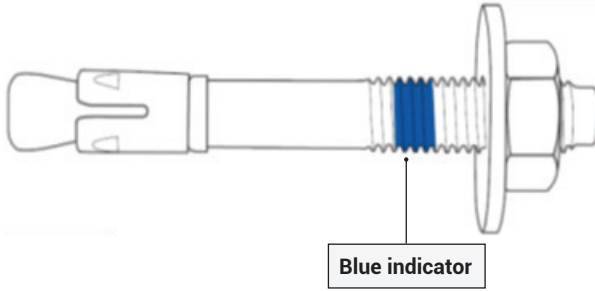


Odin Safety Endüstriyel Ürünler Anonim Şirketi
Merkez Ofis: Merkez Mahallesi Hasat Sokak No:52/1 Şişli/İSTANBUL
Üretim/Depo: Tatlıkuyu Mah. 1302/3 Sokak No:23/B Gebze/ KOCAELİ

+90 (212) 963 16 41
info@odinsafety.com.tr
www.odinsafety.com.tr



6. Anchor Bolt



- » **Product Name:** HSA-R SS
- » **Material** : Stainless Steel
- » **Diameter** : 12 mm
- » **Length** : 100 mm

Anchor Hanger		Anchor Bolt			
Name	Diameter	Reference No	Diameter	Lenght	Torque
OD-BH / OD-BH-D	12 mm	HSA-R SS	12 mm	100 mm	50 Nm

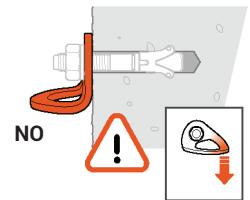
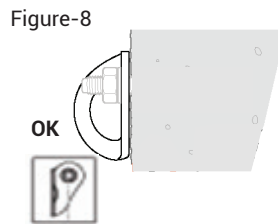
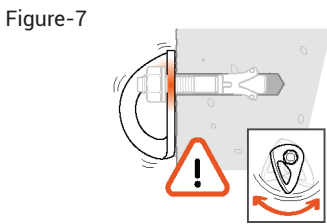
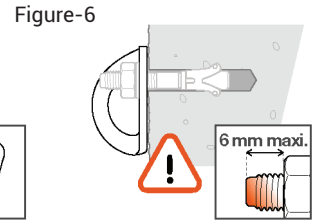
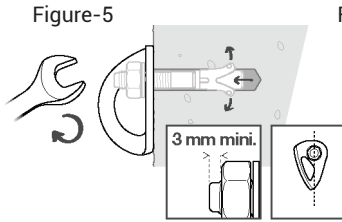
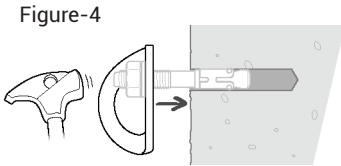
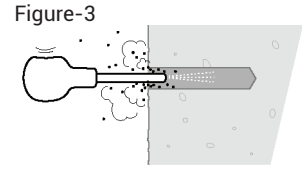
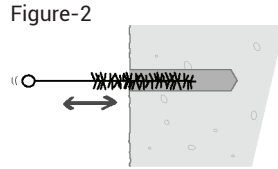
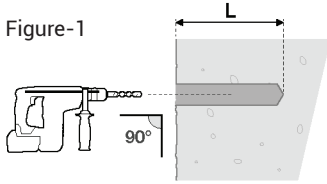
7. Installation

OD-BH and OD-BH-D must be installed by Odin Safety teams or personnel trained and authorized by Odin Safety. The Responsibility of the whole system belongs to the company that performed the installation. See the installation details in 7.1 section and the documentation after installation and periodic examination in Annex A.

WARNING:

- » The ground on which the installation is made must be made of rock or concrete material. Before installing, check the quality of the ground.
- » OD-BH an OD-BH-D may have a lower loadbearing capacity if it's installed on a soft rock so installers must consider this.

7.1 OD-BH Installation



Reference Bolt

Code : HSA-R SS

Material : 316 quality stainless steel

Diameter: \varnothing 12 mm

Length : 100 mm

- » Drill the ground where the product will be installed at the diameter and depth specified in the user's manual of the bolt. (Figure-1)
- » Clean the dust inside the housing first with a brush and then with an air blower. (Figure-2 and Figure-3)
- » Push the anchor bolt into the socket with OD-BH and tighten the bolt to the tension specified in the anchor bolt's user manual. (Figure-4, Figure-5 and Figure-6)
- » After each assembly, it should be checked that the lug does not rotate on the anchor bolt. (Figure-7, Figure-8 and Figure-9)

WARNING: With OD-BH / OD-BH-D, only stainless steel bolt must be used. Do not slip the rope directly inside the anchor, only attach with a carabiner to the OD-BH anchor.

A. Responsibility

- » Users must read and understand the user guide before using the product.
- » Working at height contains dangers that can lead to injuries and fatal accidents.
- » It is the responsibility of the user to learn and apply proper usage techniques and safety methods.
- » OD-BH and OD-BH-D must be used only by or under the supervision of trained personnel.
- » Misuse or improper use can result in serious injury and fatal accidents.
- » It is not suitable to use for lifting and carrying materials.
- » Full body harness is the only acceptable body holding device that can be used in a fall arrest system.
- » It must not be used outside of its design purpose.
- » It is essential for safety that the anchor device or anchor point should always be positioned, and the work carried out in such a way, as to minimize both the potential for falls and potential fall distance. Where it is essential that the anchor device/point is placed above the position of the user to limit the risk and the height of a fall.
- » It is not suitable for working at heights alone, It must be used together with the types of equipment with CE certified Full body harness (EN 361), shock-absorbing lanyard (EN 355), carabiner (EN 362).
- » This product should be used at temperatures between a minimum of -30 ° C and a maximum of + 70 °
- » Users should be medically fit to work at heights. Poor health (heart and circulation problems, assumption of medication, alcohol) may have negative influence on the safety of a person working at a height.
- » If any steps are not clear during the installation phase, get in touch with the manufacturer.

B. Using OD-BH (Bolt Hanger) and OD-BH-D (Bolt Hanger Set) (EN795:2012 TYPE A,CEN/TS 16415:2013 TYPE A)

- » They have been tested and approved by QUINTIN CERTIFICATIONS, an ISO 17025 accredited laboratory, to use by 2 people at the same time in axial direction and overhead position.
- » The strength of the structure where the anchor assembly will be made must be checked.
- » It can be used on rock, concrete ,steel surfaces. The strength of the structure where the anchor assembly will be made must be checked to be sure that it resists to this load. Be aware of in the case of a fall the force to be generated on the structure is in the direction of the user's fall and will be at the upper anchor point. That maximum force is 13 kN.
- » The warning label and the product must be checked and it must be determined whether the anchor is suitable for use. Makes sure that the date of the next check of the system is not due, or it is not more than a year from the last date of the check.
- » The next control date of the system on the warning sign must continue or not exceeded 1 year from the last control date.
- » When they are used as part of a fall arrest system, the user has to be equipped with a means of limiting the maximum dynamic forces exerted on the user during the arrest of a fall to a maximum of 6 kN.

C. Supplementary Information Regarding standard; EN365

C1. Rescue Plan

It is compulsory to prepare an emergency rescue plan for any accident that the employee has experienced during the use of the product and rescue plans must be put in place to solve any emergency situations that may arise during work execution.

C2. Anchor Point

The strength of the structure where the anchor assembly will be made must be checked to be sure that it resists to this load. Be aware of in the case of a fall the force to be generated on the structure is in the direction of the user's fall and will be at the upper anchor point. That maximum force is 13 kN.

C3. Various Situations

- » A fall arrest harness must be used once to protect the working personnel during the fall.
- » In the Fall Arrest system, safe fall distance must be measured before each use to prevent the user from hitting the ground or other surfaces in the fall situation.
- » A dangerous situation may be raised when more than one product is used together so the safety function of the equipment should not affect each other.

D. Product Control and Validation

D1. Before & After Each Use

The product must be checked regularly before and after each use, and findings must be recorded. Check the product according to the following criteria if.

- » There is any deformation on the ground where the installation is being made,
- » There is any wear, cracks, fractures, corrosion on it,
- » There are any chemicals exposed with it,
- » There is a blue indicator on the HSA-R SS anchor bolt. When the blue marked part on the bolt is seen on the surface,

If the product has one of the above conditions, the product must be withdrawn from use immediately, not used, and the manufacturer must be informed about it.

D2. During Each Use

When using OD-BH (Bolt Hanger) with another system, make sure that the whole system is correctly positioned and compatible with each other.

E. ODİN SAFETY General Information

E1. Product Life

Metallic materials do not have a theoretical lifetime. The product must be checked periodically at least once a year and it must be documented whether it is safe to use or not. ODİN SAFETY is not responsible for the use of the product that does not have annual periodic control.

- » OD-BH (Bolt Hanger) and OD-BH-D (Bolt Hanger Set) are made of stainless steel materials.
- » The material is highly resistant to atmospheric corrosion.
- » Superficial rust stains can be seen on the product depending on the area of use (industrial areas; iron dust and chemicals in shorter times.. Areas close to the sea; salt in the air). These superficial stains can be removed with an appropriate maintenance program.
- » The suitability of the system for use is given only one circumstance that the annual periodic controls are carried out and resulted positive by the manufacturer or persons Authorized by the manufacturer.
- » Regular periodic examinations and that the safety of users depends upon the continued efficiency and durability of the product.
- » The product must be withdrawn from the service immediately and destroyed to prevent further usage in the following situations;
 - If there has been a drop in the system
 - If corrosion is observed on the system components,
 - If the system was recorded not suitable for use during control and any doubt about it,
 - If there are changes in standards, laws, compliance with the usage technique, and similar cases.

- There is any doubt arise about its condition for safe use.
- It have been used to arrest a fall and not used again until confirmed in writing by a competent person that it is acceptable to do.

E2. Storage

The product is offered with its user guide and its model and standard written on it. The storage area of the product should be meet the following criteria;

- » The product must be kept away. abrasive chemicals (acids, solvents, etc.)
- » The product must be kept away from heat sources.

E3. Maintenance

Taking good care of the product after each use extends the life of it. Use metal cleaners to clean the product. For more information, you can contact us at **info@odinsafety.com.tr**

E4. Changes & Repair

Modifications (repairs or additions, changing a part) are strictly forbidden without the written permission of Odin Safety.

- » Any repairs on the product are carried out only by the manufacturer (Odin Safety) or manufacturer's authorized persons.
- » Odin Safety is not responsible for the dangers that may arise if the repair and maintenance are carried out by unauthorized persons.
- » The product information of usage, maintenance, and repair can be obtained from the authorized distributor in the official language of the country where the product is in service.

E5. Periodical Inspection

Before each use of your product or in certain periods, products must be checked at least once a year by the manufacturer or by a competent person authorized by the manufacturer. These control and maintenance dates should be written on the warning label.

The safety of users depends upon the continued efficiency and durability of the equipment. Check the legibility of the product markings.

During the inspection of product following information should be recorded; Type of the product, model, contact information of producer, serial number, date of production, date of purchase, date of first use, next inspection date, problems, recommendations, name and surname of inspector.

For detailed information, **visit www.odinsafety.com.tr**

E6. Warranty

This product is guaranteed for 10 years against all kinds of material and manufacturing defects under proper usage and storage conditions. The warranty is not valid in the following cases;

- » Use in wrong areas,
- » Product is misused, torn, cut, corroded, damaged by accidents
- » Periodic controls are done by unauthorized persons.
- » Repair and Maintenance are done by unauthorized persons.
- » Decline
- » Failure to comply with storage conditions

F. Certification

This product is certified the ISO 17025 accredited laboratory QUINTIN CERTIFICATIONS for EN 795:2012 TYPE A , CEN/TS 16415: 2013 TYPE A standard.



QUINTIN CERTIFICATIONS
825 route de Romans
38160 Saint Antoine l'Abbaye
France

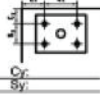
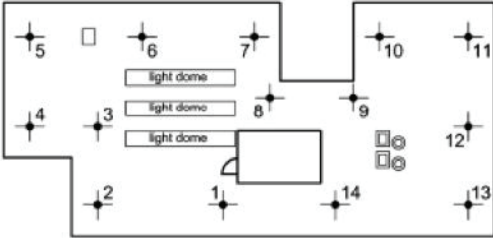


Warning: Please read the usage instructions carefully before using. The user manual must be published in its own language in each country.



Warning: it s essential for the safety of the user that if the product is re-sold outside the original country of destination the reseller shall provide instructions for use, for maintenance, for periodic examination and for repair in the language of the country in which the product is to be used.

SHEMATIC INSTALLATION PLAN

Schematic installation plan			
Building/Structure			
Address:		Order no.:	
Remarks:		Building type:	
		Roof shape:	
		Anchor device:	
Customer			
Name:		Contact person:	
Address:		Phone:	
Installer			
Name:		Chief installer:	
Address:		Phone:	
Anchor device			
Manufacturer:			
Model/type identification:			
Building component			
Component 1: e.g. concrete ceiling		Minimum thickness: e.g. 250mm	
Component 2: e.g. concrete column		Minimum thickness: e.g. 500mm	
Building mat: e.g. reinforced concrete		Quality: e.g. min. C25/30	
Fixings/Dowels		Manufacturer:	
<input type="checkbox"/> Fixing data <input type="checkbox"/> data not required if through fixed		Type: _____ Material: _____ Min. edge distance (c): _____ Min. axial spacing (s): _____ Min. component thickness: _____ Permissible tensile force: _____ Permissible shear force: _____	
Drill-hole diam: _____ mm Drill-hole depth: _____ mm Torque: _____ Nm			
Edge distance Cx: _____ Cx Axial spacing Sx: _____ Sx		Edge distance Cy: _____ Cy Axial spacing Sy: _____ Sy	
Remarks: _____			
Drilling method: <input type="checkbox"/> Hammer <input type="checkbox"/> Rotary <input type="checkbox"/> Torque controlled spanner		<input type="checkbox"/> Drill-hole cleaning <input type="checkbox"/> Fixing test device	
Testing device: <input type="checkbox"/> Impact System <input type="checkbox"/> yes <input type="checkbox"/> no <input type="checkbox"/> wet <input type="checkbox"/> dry <input type="checkbox"/> yes <input type="checkbox"/> no			
CHECK LIST:			
<input type="checkbox"/> Substrate as expected (no doubt on capacity) <input type="checkbox"/> Installation complies with manufacturer's instructions <input type="checkbox"/> Recommended fixings used <input type="checkbox"/> All fixings photographed with identification number <input type="checkbox"/> Fixings exposed <input type="checkbox"/> Installation plan placed on site → <input type="checkbox"/> Screw securing by through hole fixing technology <input type="checkbox"/> Additional information _____			
Roof ground plan:			
			
Required pull-out force (kN), required torque [Nm] achieved?			
Anchor point 1 _____	Anchor point 5 _____	Anchor point 9 _____	Anchor point 13 _____
Anchor point 2 _____	Anchor point 6 _____	Anchor point 10 _____	
Anchor point 3 _____	Anchor point 7 _____	Anchor point 11 _____	
Anchor point 4 _____	Anchor point 8 _____	Anchor point 12 _____	
Additional fixings: _____			
Remarks by the chief installer: _____			
Date: _____ Signature: _____			





Odin Safety Endüstriyel Ürünler Anonim Şirketi
Merkez Ofis: Merkez Mahallesi Hasat Sokak No:52/1 Şişli/İSTANBUL
Üretim/Depo: Tatlıkuyu Mah. 1302/3 Sokak No:23/B Gebze/ KOCAELİ

+90 (212) 963 16 41
info@odinsafety.com.tr
www.odinsafety.com.tr

