



Connect Line



Connect Life



**OD-RB-44 / REBAR ANCHOR**  
**User Guide**

## 1. Product Usage Report

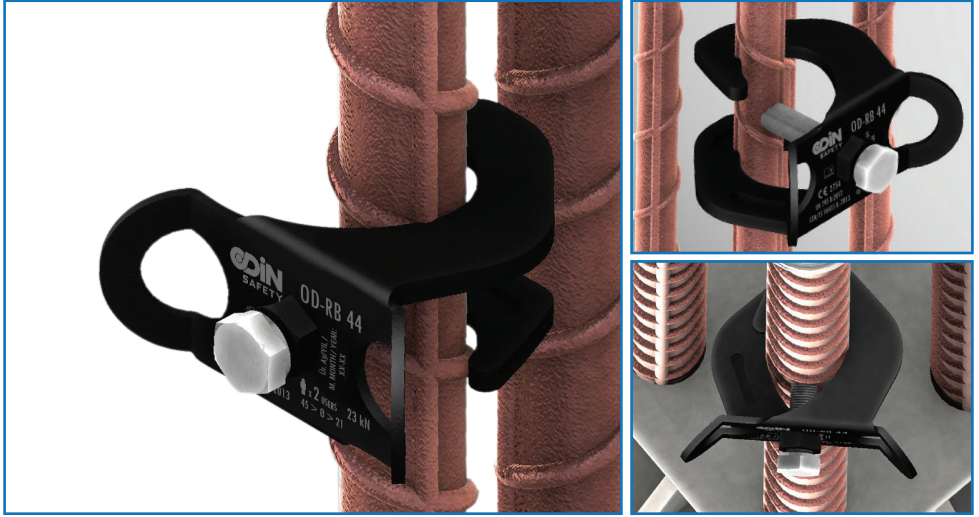
Serial Number : .....  
Date of Production : .....  
Date of Delivery : .....  
Stamp & Signature : .....  
.....  
.....  
.....  
Date of first use : .....  
Name & Surname of user : .....

## 2. Annual Product Inspections

B.1	B.2 Inspection Date	B.3 Next Inspection Date	B.4 Inspected by
1			
2			
3			
4			
5			
6			
7			



3.  
OD-RB-44 REBAR ANCHOR  
(EN 795:2012 TYPE B ve CEN/TS 16415:2013 TYPE B PPE 2016/425)



### 3.1 Area of Use

OD-RB-44 (Rebar Anchor) was designed to create connection points from iron ores in construction applications of personnel easily and safely. It is a user-friendly anchor with its superior and innovative geometric design.

### 3.2 Features

- » It is produced, tested, and certified for EN 795: 2012 TYPE B and CEN / TS 16415: 2013 TYPE B standards and conformed to the PPE 2016/425
- » It is made of steel.
- » It is suitable for 2 people to work at the same time.
- » It can be used with all rebars with a diameter of  $\varnothing$  21 - 45 mm and having minimum strength of 23kN.

#### Certification

EN795:2012  
TYPEB

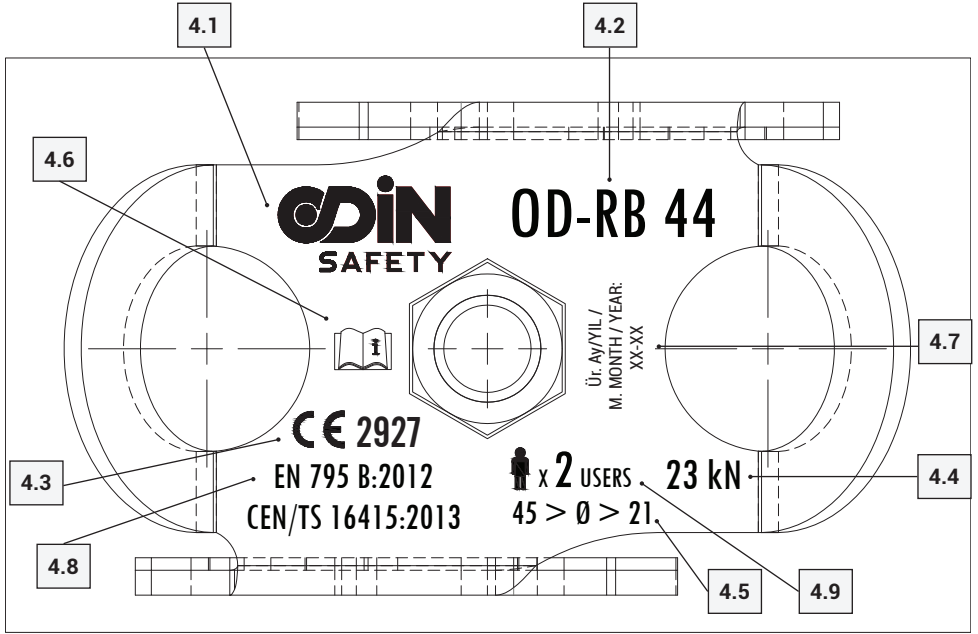
CEN TS  
16415:2013  
TYPEB

PPE  
2016/425

#### Max. Number of User

2 

4.  
Label



Code	Description	Code	Description
4.1	Producer Name	4.6	Read User Guide
4.2	Model Name	4.7	Serial Number / M. Month /Year
4.3	Name of the notified body in charge of annual control of the production	4.8	Standard
4.4	Strength	4.9	Max. Number of Users
4.5	Diameter		



5.  
Warning Label



ANKRAJLAR  
ANCHORAGES



**DİKKAT ! /ATTENTION !**  
YÜKSEKTE ÇALIŞMA BU NOKTADAN  
İTİBAREN BAŞLAMAKTADIR.  
WORKING AT HEIGHT



DÜŞÜŞ DURDURMA KEMERİ (EN361)  
İLE BİRLİKTE ANKRAJ NOKTASI  
OLARAK KULLANIN.  
USE A FALL ARREST HARNESS (EN 361)

EN 795/A:2012 / CEN/TS 16415/A:2013

EN 795/B:2012 / CEN/TS 16415/B:2013



**UYARI: SİSTEMİN PERİYODİK KONTROLÜ YILDA EN AZ BİR DEFA YAPILMALIDIR.**  
**ATTENTION : ANCHORS must be checked by a qualified person at least once a year.**

Ankraj / Anchorage	OD-EXT	OD-BH	OD-S6	OD-FLASH	OD-FQ	OD-RB44	OD-IBR
	<input type="checkbox"/>	<input type="checkbox"/>	<input type="checkbox"/>	<input type="checkbox"/>	<input type="checkbox"/>	<input type="checkbox"/>	<input type="checkbox"/>

**Kurulum Tarihi / Installation Date**

**Kurulum Uzmanı / Installation By**

**Yetkili Kişi / Authorized Only**

**Maksimum Kullanıcı / Max. Users**

**Bir Sonraki Kontrol Tarihi**

**/ Next Control Date**



Odin Safety Endüstriyel Ürünler Anonim Şirketi  
Merkez Ofis: Merkez Mahallesi Hasat Sokak No:52/1 Şişli/İSTANBUL  
Üretim/Depo: Tatlıkuyu Mah. 1302/3 Sokak No:23/B Gebze/ KOCAELİ

+90 (212) 963 16 41  
info@odinsafety.com.tr  
www.odinsafety.com.tr  
www.odinisguvenligi.com



## 6. Installation

OD-RB-44 must be installed by Odin Safety teams or personnel trained and authorized by Odin Safety. The Responsibility of the whole system belongs to the company that performed the installation. See the installation details in 6.1 section.

### 6.1 OD-RB-44 Installation

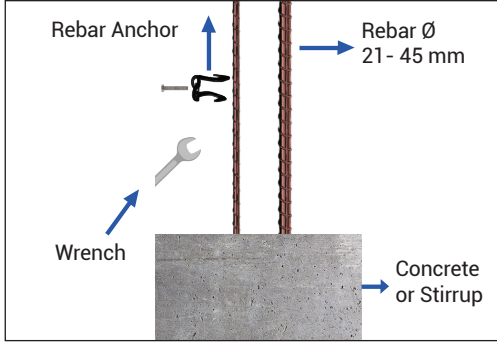


Figure -1

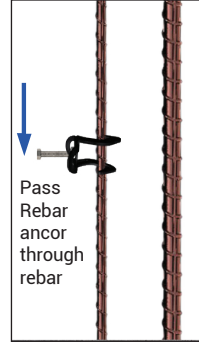


Figure -2

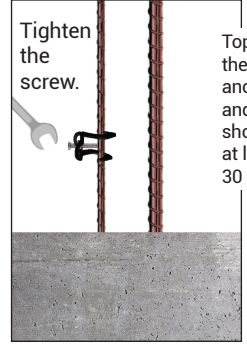


Figure -3

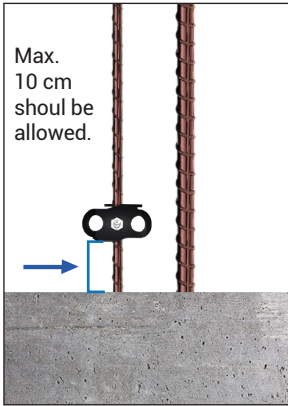


Figure -4

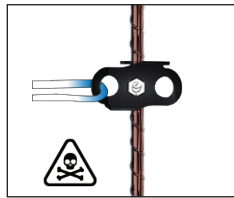


Figure -5

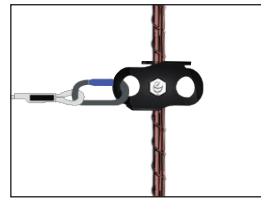


Figure -6

### Anchor Bolt

Material : M16X80 Galvanized Bolt

Diameter : Ø 16 mm

Length : 80 mm

- » OD-RB-44 must be used on rebars with minimum 21 mm and maximum 45 mm diameter (Figure 1).
- » OD-RB-44 can be mounted on vertical and horizontal rebars. The rebars to be mounted must be resistant to at least 23 kN strength.
- » OD-RB-44 will be mounted in vertical position;
  - » OD-RB-44 is passed through the rebars (Figure-2)
  - » It is brought to the point where it will be fixed with a maximum clearance of 10 cm between the surface of the stirrup on the concrete or stirrup and the OD-RB-44 bottom point. (Figure-3)

- » After the measurement is completed and it reaches the point where it will be fixed, OD-RB-44 is fixed with M16x80 bolts.
- » The bolt is tightened on the rebar such a way that they touch the filet tightly. (Figure-4)



### Warning

You can create an anchorage point on the Rebar Anchor with the help of a carabiner, do not connect the rope directly to the Rebar Anchor. (Figure-5)  
 Rebar Anchor is suitable for axial use only. (Figure-6)  
 While installing the Rebar anchor, pay attention to the dimensions.  
 Check whether the anchor is moving or not after each assembly.

## 6.2. OD-RB-44 Deinstallation

After the use of OD-RB-44 Bar Anchor is completed, the bolt is untightened and removed from use.

### A. Responsibility

- » Users must read and understand the user guide before using the product.
- » Working at height contains dangers that can lead to injuries and fatal accidents.
- » It is the responsibility of the user to learn and apply proper usage techniques and safety methods.
- » OD-RB-44 must be used only by or under the supervision of trained personnel.
- » Misuse or improper use can result in serious injury and fatal accidents.
- » It must not be used outside of its design purpose.
- » Full body harness is the only acceptable body holding device that can be used in a fall arrest system.
- » It is essential for safety that the anchor device or anchor point should always be positioned, and the work carried out in such a way, as to minimize both the potential for falls and potential fall distance. Where it is essential that the anchor device/point is placed above the position of the user to limit the risk and the height of a fall. Misuse of it could result in serious injury or death.
- » It is not suitable for working at heights alone, It must be used together with the types of equipment with CE certified Full body harness (EN 361), shock-absorbing lanyard (EN 355), carabiner (EN 362).
- » OD-RB-44 should only be used as personal fall protection equipment and not as lifting equipment. It is not suitable to use for lifting and carrying materials.
- » This product should be used at temperatures between a minimum of -30 ° C and a maximum of + 70 ° .
- » Users should be medically fit to work at heights. Poor health (heart and circulation problems, assumption of medication, alcohol) may have negative influence on the safety of a person working at a height.
- » If any steps are not clear during the installation phase, get in touch with the manufacturer.

### B. Using OD-RB-44 (EN 795:2012 TYPE B, CEN/TS 16415:2013 TYPE B PPE 2016/425)

- » The UE examination was performed by ALIENOR certification NB 2754, Modul C2 was performed by QUINTIN CERTIFICATION NB 2927.
- » It is suitable for 2 people to work at the same time.
- » The strength of the structure where the anchor assembly will be made must be checked.
- » It can be used on iron ores in construction applications. The strength of the structure where the anchor assembly will be made must be checked to be sure that it resists to this load. Be aware of in the case of a fall the force to be generated on the structure is in the direction of the user's fall and will be at the upper anchor point. That maximum force is 13 kN.
- » The warning label and the product must be checked and it must be determined whether the anchor is suitable for use. Makes sure that the date of the next check of the system is not due, or it is not more than a year from the last date of the check.



- » The next control date of the system on the warning sign must continue or not exceeded 1 year from the last control date.
- » This product tested in accordance with the EN 795 Type B standard. It should not be used outside of its intended use.
- » When the OD-RB-44 is used as part of a fall arrest system, the user must be equipped with the appropriate equipment to limit the dynamic impact force to a maximum of 6 kN when falling from a maximum height.

## C. Supplementary Information Regarding standard; EN365

### C1. Rescue Plan

It is compulsory to prepare an emergency rescue plan for any accident that the employee has experienced during the use of the product and rescue plans must be put in place to solve any emergency situations that may arise during work execution.

### C2. Anchor Point

The strength of the structure where the anchor assembly will be made must be checked to be sure that it resists to this load. Be aware of in the case of a fall the force to be generated on the structure is in the direction of the user's fall and will be at the upper anchor point. That maximum force is 13 kN.

### C3. Various Situations

- » A fall arrest harness must be used once to protect the working personnel during the fall
- » In the Fall Arrest system, safe fall distance must be measured before each use to prevent the user from hitting the ground or other surfaces in the fall situation.
- » A dangerous situation may be raised when more than one product is used together so the safety function of the equipment should not affect each other.

## D. Product Control and Validation

### D1. Before & After Each Use

The product must be checked regularly before and after each use, and findings must be recorded. Check the product according to the following criteria if.

- » There is any deformation on the ground where the installation is being made,
- » There is any wear, cracks, fractures, corrosion on it
- » There are any chemicals exposed with it,

If the product has one of the above conditions, the product must be withdrawn from use immediately, not used, and the manufacturer must be informed about it.

### D2. During Each Use

When using OD-RB-44 (Rebar Anchor) with another system, make sure that the whole system is correctly positioned and compatible with each other.





## E. ODİN SAFETY General Information

### E1. Product Life

Metallic materials do not have a theoretical lifetime. The product must be checked periodically at least once a year and it must be documented whether it is safe to use or not. ODİN SAFETY is not responsible for the use of the product that does not have annual periodic control.

- » OD-RB-44 is made of steel materials.
- » The material is highly resistant to atmospheric corrosion.
- » Superficial rust stains can be seen on the product depending on the area of use (industrial areas; iron dust and chemicals in shorter times.. Areas close to the sea; salt in the air). These superficial stains can be removed with an appropriate maintenance program.
- » The suitability of the system for use is given only one circumstance that the annual periodic controls are carried out and resulted positive by the manufacturer or persons Authorized by the manufacturer.
- » Regular periodic examinations and that the safety of users depends upon the continued efficiency and durability of the product.
- » The product must be withdrawn from the service immediately and destroyed to prevent further usage in the following situations;
  - If there has been a drop in the system
  - If corrosion is observed on the system components,
  - If the system was recorded not suitable for use during control and any doubt about it,
  - If there are changes in standards, laws, compliance with the usage technique, and similar cases.
  - If there is any doubt arise about its condition for safe use.
  - If it has been used to arrest a fall and not used again until confirmed in writing by a competent person that it is acceptable to do.

### E2. Transportation

It must be transported in a bag to keep OD-RB-44 away from moisture, chemicals and sharp edges and to prevent contact with other objects.

### E3. Storage

The product is offered with its user guide and its model and standard written on it. The storage area of the product should be meet the following criteria;

- » The product must be kept away. abrasive chemicals (acids, solvents, etc.)
- » The product must be kept away from heat sources.

### E4. Maintenance

Taking good care of the product after each use extends the life of it. Use metal cleaners to clean the product. For more information, you can contact us at [info@odinsafety.com.tr](mailto:info@odinsafety.com.tr)

### E5. Changes & Repair

Modifications (repairs or additions, changing a part) are strictly forbidden without the written permission of Odin Safety.

- » Any repairs on the product are carried out only by the manufacturer (Odin Safety) or manufacturer's authorized persons.
- » Odin Safety is not responsible for the dangers that may arise if the repair and maintenance are carried out by unauthorized persons.
- » The product information of usage, maintenance, and repair can be obtained from the authorized distributor in the official language of the country where the product is in service.



Connect Line



Connect Life



[www.odinsafety.com.tr](http://www.odinsafety.com.tr)

[www.odinisguvenligi.com](http://www.odinisguvenligi.com)

## E6. Periodical Inspection

Before each use of your product or in certain periods, products must be checked at least once a year by the manufacturer or by a competent person authorized by the manufacturer. These control and maintenance dates should be written on the warning label.

The safety of users depends upon the continued efficiency and durability of the equipment. Check the legibility of the product markings.

During the inspection of product following information should be recorded; Type of the product, model, contact information of producer, serial number, date of production, date of purchase, date of first use, next inspection date, problems, recommendations, name and surname of inspector.

For detailed information, visit [www.odinsafety.com.tr](http://www.odinsafety.com.tr)

## E7. Warranty

This product is guaranteed for 5 years against all kinds of material and manufacturing defects under proper usage and storage conditions. The warranty is not valid in the following cases;

- » Use in wrong areas,
- » Product is misused, torn, cut, corroded, damaged by accidents
- » Periodic controls are done by unauthorized persons.
- » Repair and Maintenance are done by unauthorized persons.
- » Decline
- » Failure to comply with storage conditions

## F. Certification

The EU examination was performed by ALIENOR certification NB 2754, Modul C2 was performed by QUINTIN CERTIFICATION NB 2927.



QUINTIN CERTIFICATIONS  
825 route de Romans  
38160 Saint Antoine l'Abbaye  
France  
[info@quintincertifications.fr](mailto:info@quintincertifications.fr)

Alienor Certification  
21 Rue Albert Einstein  
86100 Châtellerault - FRANCE  
Tel : +33 05 49 14 13 10  
[contact@alienor-certification.fr](mailto:contact@alienor-certification.fr)

You can find the EU declaration of the PPE regulation 2016/425 in our website ([www.odinsafety.com.tr](http://www.odinsafety.com.tr))



**Warning:** Please read the usage instructions carefully before using them. The user manual must be published in its language in each country.



**Warning:** it is essential for the safety of the user that if the product is re-sold outside the original country of destination the reseller shall provide instructions for use, for maintenance, for periodic examination and for repair in the language of the country in which the product is to be used.





**Odin Safety Endüstriyel Ürünler Anonim Şirketi**  
Merkez Ofis: Merkez Mahallesi Hasat Sokak No:52/1 Şişli/İSTANBUL  
Üretim/Depo: Tatlıkuyu Mah. 1302/3 Sokak No:23/B Gebze/ KOCAELİ

+90 (212) 963 16 41  
info@odinsafety.com.tr  
www.odinsafety.com.tr  
www.odinisguvenligi.com

