



Connect Line



Connect Life



## OD-VERTILINE / VERTICAL LIFELINE SYSTEM User Guide

### 1. Product Usage Report

Serial Number : .....  
Date of Production : .....  
Date of Delivery : .....  
Stamp & Signature : .....  
.....  
.....  
.....  
Date of first use : .....  
Name & Surname of user : .....

### 2. Annual Product Inspections

B.1	B.2 Inspection Date	B.3 Next Inspection Date	B.4 Inspected by
1			
2			
3			
4			
5			
6			
7			



### 3. OD-VERTILINE Vertical Lifeline System (EN 353-1:2014+ A1:2017 PPE 2016/425)



#### 3.1 Area of Use

OD-VERTILINE is the fixed vertical lifeline and it provides you with safe access to heights (fixed stairs, tower tops, poles, lighting towers, chimneys...) with its features.

#### 3.2 Features

- » It is produced, tested, and certified by EN 353-1:2014 + A1:2017 standards and conformed to the PPE regulation 2016/425.
- » Aluminum and stainless steel components.
- » Non-sparking feature,
- » Special designed spring indicator,
- » Uninterrupted passage on the line with specially designed rope holder,
- » Special apparatus that eliminates the wind effect of 30 meters and above,
- » Suitable for 3 people to work at the same time with 3 meters intervals,
- » The length is from 2 meters to 250 meters,

Certification

EN 353-1:  
2014+A1:2017

PPE 2016/425

Maximum No of Users

3 

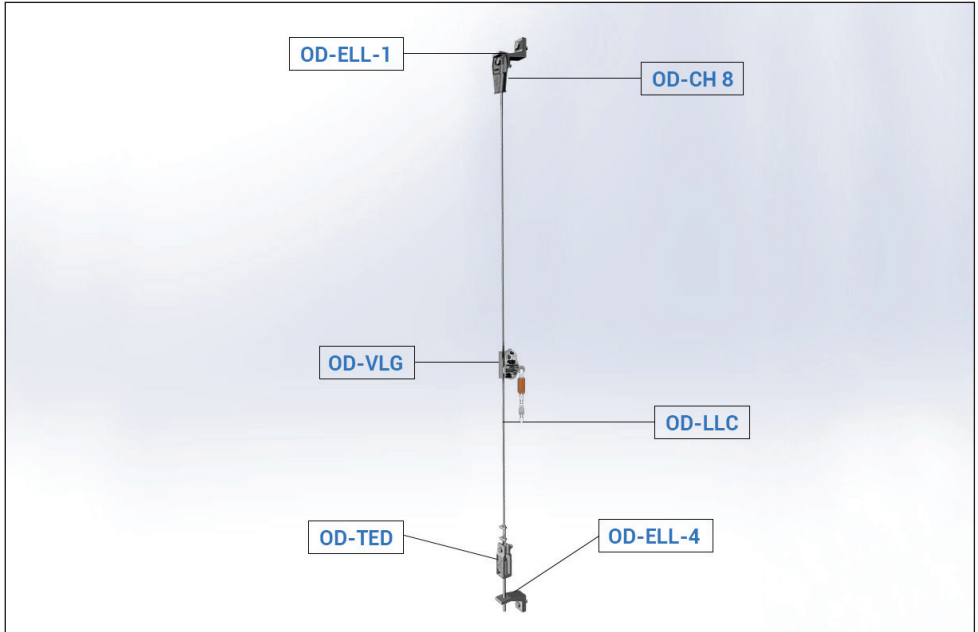
Force Directions



Installation Substructure



#### 4. OD-VERTILINE Components



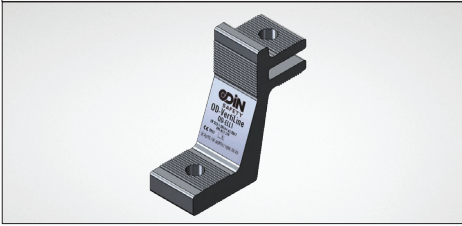
##### 4.1 OD-MAXILINE Components - General

Code	Description	Code	Description
OD-ELL-1	Main Anchor	OD-ELL-4	Main Anchor
OD-CH 8	Rope Holder	OD-VLG	Fall Arrest Device
OD-TED	Tension Meter	OD-LLC	8mm 7x19 Wire Rope

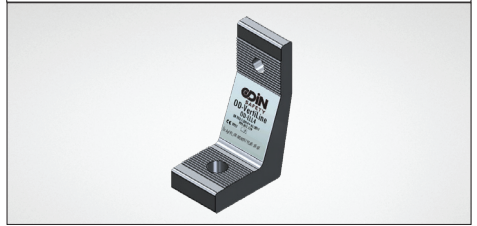


## 4.2 OD-VERTILINE Components- Details

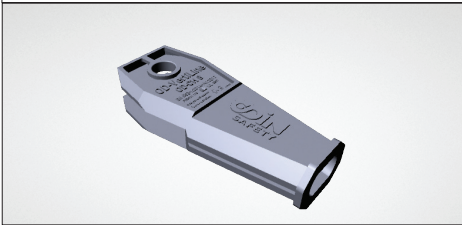
**OD-ELL-1 Main Anchor** / Aluminium



**OD-ELL-4 Main Anchor** / Aluminium



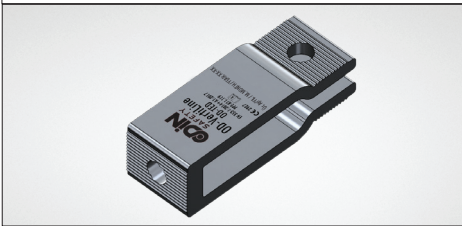
**OD-CH 8 Rope Holder** / Stainless Steel



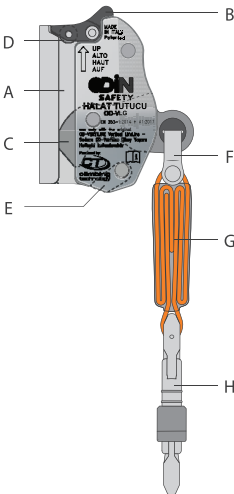
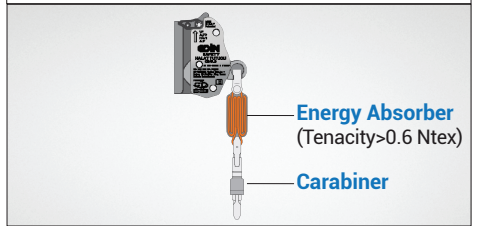
**OD-LLC 7x19 Steel Rope** / Stainless Steel



**OD-TED Tension Meter** / Aluminium

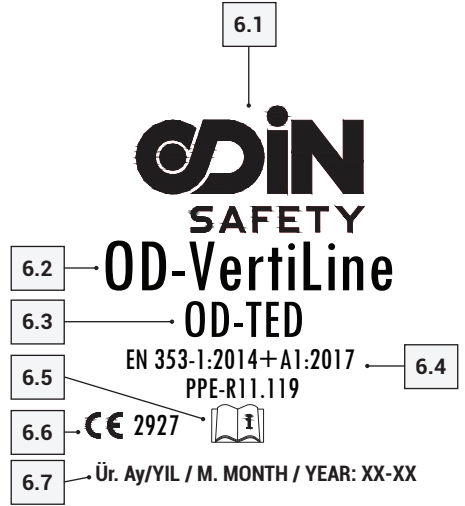
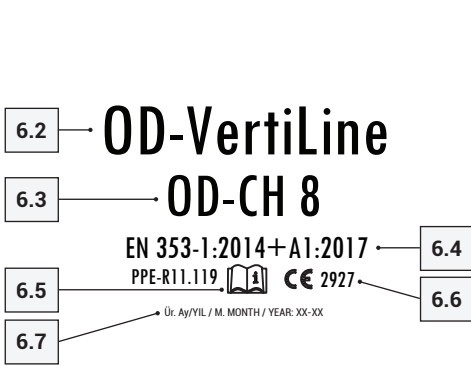
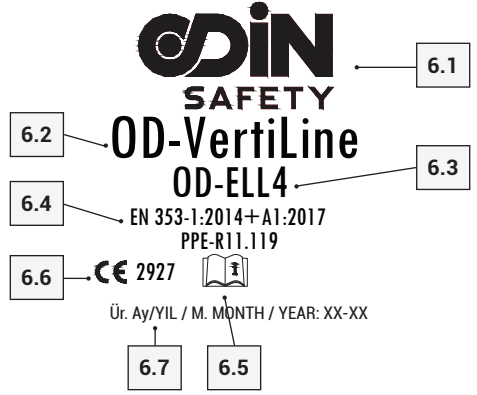
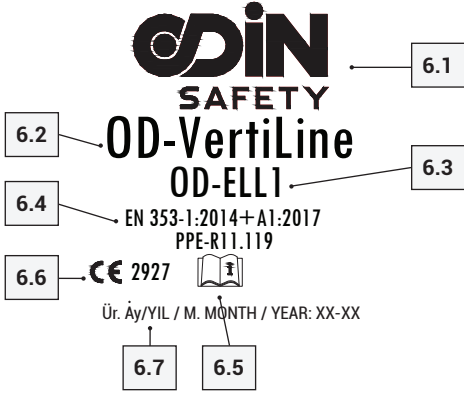


**OD-VLG Fall Arrest Device** / Stainless Steel



<b>A</b>	Body
<b>B</b>	Locking Lever
<b>C</b>	Locking Cam
<b>D</b>	Reel
<b>E</b>	Oneway mobile body system
<b>F</b>	Carabiner for webbing connection
<b>G</b>	Webbing with energy absorber
<b>H</b>	Terminal Connector

5.  
Label



MADE  
IN ITALY  
Patented

UP  
ALTO  
HAUT  
AUF

**ODIN**  
SAFETY

**HALAT TUTUCU**  
OD-VLG

EN 353-1:2014 + A1:2017

use only with the original  
OD-VERTILINE Vertical LifeLine -  
Sadece OD-Vertiline Dikey Yaşam  
Halatında kullanılmalıdır

Produced by:

**CT**  
climbing  
technology

6.7

Serial No.  
AAAAADD  
BBYY

UP  
AUF

HAUT  
ALTO

The used cable must be conform to  
the fall arrester's requirements - Le  
cable utilisé doit être conforme aux  
exigences de l'antichute - Il cavo  
utilizzata deve essere conforme alle  
esigenze dell'anticaduta - El cable  
debe ser conforme a los requisitos  
del anticaídas - Das verwendete  
Stahisell muss den Anforderungen  
des Auffanggerätes entsprechen

6.1

6.3

6.4

6.5

6.6

CE 2927

6.9

SINGLE USER  
UTILISATEUR UNIQUE  
UTILIZZATORE UNICO  
FÜR EINE PERSON  
USUARIO UNICO

50+140 kg

Produced by:

**CT**  
climbing  
technology

6.8

Serial n°  
Month and year

ODIN  
SAFETY  
ENERGY  
ABSORBER  
Serial No.:  
S000  
Date of manufacture:  
MM/YYYY  
produced by:

ENERGY ABSORBER

Code	Description	Code	Description
6.1	Manufacturer Name	6.6	Name of the notified body in charge of annual control of the production
6.2	Name of the PPE	6.7	Serial Number / M. Month /Year
6.3	Component reference	6.8	Max weight for user with equipments allowed
6.4	Standard which is conform	6.9	Min weight for user with equipments allowed
6.5	Invitation to read user guide before use		



6.  
Warning Label



OD-VERTILINE DİKEY YAŞAM HATTI  
OD-VERTILINE VERTICAL LIFELINE



**DİKKAT ! /ATTENTION !**  
YÜKSEKTE ÇALIŞMA BU NOKTADAN  
İTİBAREN BAŞLAMAKTADIR.  
WORKING AT HEIGHT



GÖĞÜSTE DÜŞÜŞ DURDURMA  
BAĞLANTILI TAM KORUMALI  
DÜŞÜŞ DURDURMA KEMERİ (EN 361)  
İLE BİRLİKTE KULLANIN.  
USE A FULL BODY HARNESS WITH A FRONT  
FALL ARREST ATTACHMENT POINT ( EN 361)

EN 353-1:2014+A1:2017 and PPE-R11.199 for 3 people



Hat Uzunluğu / Wire Length

Kurulum Tarihi / Installation Date

Kurulum Uzmanı / Installation By

Yetkili Kişi / Authorized Only

Maksimum Kullanıcı / Max. Users

Bir Sonraki Kontrol Tarihi  
/ Next Control Date

**UYARI: Sistemin periyodik kontrolü yılda en az bir defa yapılmalıdır.**

*Attention: Anchors must be checked by a qualified person at least once a year.*

**UYARI: Hatta 2 kişi arasında en az 3 metre mesafe olmalıdır.**

*Attention: At least 3 meters between 2 users.*

**UYARI: Sadece orijinal OD-VLG ( halat tutucu) kullanınız.**

*Attention: Use only original OD-VLG (wire rope holder).*

Her kullanıcı, diğer kullanıcı tarafından başlatılan hattın hareketinden etkilenebilir ve düşebilir.  
Every user can be influenced and fall due to the movement of the line initiated by the other user.



Odin Safety Endüstriyel Ürünler Anonim Şirketi  
Merkez Ofis: Merkez Mahallesi Hasat Sokak No:52/1 Şişli/İSTANBUL  
Üretim/Depo: Tatlıkuyu Mah. 1302/3 Sokak No:23/B Gebze/ KOCAELİ

+90 (212) 963 16 41  
info@odinsafety.com.tr  
www.odinsafety.com.tr  
www.odinsguvenligi.com





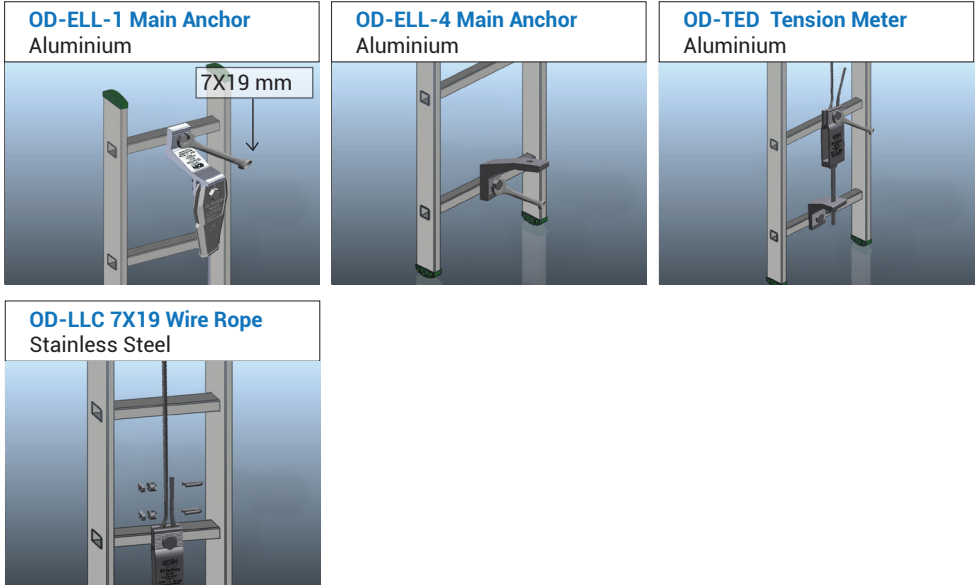
## 7.

### Installation

OD-VERTILINE (Vertical Lifeline) system installation should be done by Odin Safety installation teams or personnel authorized by Odin Safety after receiving installation and disassembly training.

- » Tested and approved with only 15° side angles.
- » In case of a possible fall in the use of the vertical lifeline, the force that will come to the structure will be in the direction of the user's fall and to the upper anchorage point of the structure, the maximum resulting force is 10 kN.
- » You can see the details of installation in the section 7.1

#### 7.1 Installation Details



- » Attach OD-LL-1 to the step using a metric 19 wrench with metric 12 bolt and nut.
- » Attach OD-LL- 4 to the step using metric 12 bolts and nuts using a metric 19 wrench as shown.
- » Tighten the metric 10 bolts using a metric 17 wrench until the blue spring on the Ted is fully closed.



**Warning:** It shall be fixed at both ends and tensioned to 500N.



**Warning:** OD-Vertiline including OD-VLG Fall Arrest Device made of stainless steel and aluminium should not be installed in a highly corrosive atmosphere (e.g. above a swimming pool) because of the risk of non-visible stress corrosion cracking, unless specific control measures are in place or compatibility is established.

## A. Responsibility

- » Users must read and understand the user guide before using the product.
- » Working at height contains dangers that can lead to injuries and fatal accidents.
- » It is the responsibility of the user to learn and apply proper usage techniques and safety methods.
- » OD-VERTILINE ( Vertical Lifeline) must be used only by or under the supervision of trained personnel.
- » Misuse or improper use can cause serious injury and fatal accidents.
- » It is not suitable to use for lifting and carrying materials.
- » It must not be used outside of its design purpose.
- » A full body harness is the only acceptable body holding device that can be used in a fall arrest system.
- » This equipment is not suitable for working at height alone, a CE certified Full body harness conform to standard EN 361 equipped with a front fall arrest attachment point.
- » Users must be medically fit to work at height. Poor health (heart and circulatory problems, drug use, alcohol) can adversely affect the safety of a person working at height.
- » If there is any unclear step during the installation phase, the manufacturer should be contacted.

## B. Using OD-VERTILINE (Vertical Lifeline System) (EN 353-1:2014+A1:2017 and PPE 2016/425)

- » OD-VERTILINE (Vertical Lifeline) is manufactured and certified by EN353-1:2014+A1:2017 norm specified in 2016/425 EU regulation.
- » Modul B and Modul C2 were performed by QUINTIN CERTIFICATION NB 2927.
- » It is suitable for 3 people to work at the same time by at least 3 meters between 2 users.
- » OD-VLG Fall Arrest Device is only for one person.
- » OD-VERTILINE is Personal Protective Equipment (PPE).
- » The strength of the structure where the anchor assembly will be made must be reviewed.
- » OD-VERTILINE is a fixed system, this system can be installed on a vertical ladder or similar systems and it has a guided type wire rope holder. The strength of the structure where the anchor assembly will be made must be checked to be sure that it resists to this load. Be aware of in the case of a fall the force to be generated on the structure is in the direction of the user's fall and will be at the upper anchor point. That maximum force is 10 kN.
- » OD-VERTILINE creates a continuous safety point such as stairs, etc., against falling from a height.
- » OD-VERTILINE and OD-VLG Fall Arrest Device can be used at a minimum -30°C and maximum +50 °C temperature.
- » The warning label and the product must be checked and it must be determined whether the anchor is suitable for use. Makes sure that the date of the next check of the system is not due, or it is not more than a year from the last date of the check.
- » The next control date of the system on the warning sign must continue or not exceeded 1 year from the last control date.
- » If this system is used in areas where there are environmental hazards, the user must take additional precautions to prevent injury or damage to the equipment. Environmental hazards include high heat from welding or metal cutting, seawater, high voltage lines, explosive or toxic gases, caustic chemicals, moving machinery, and sharp edges.



**Warning:** The weight of the user must be a minimum of 50 kg without equipments and a maximum of 140 kg with clothes and equipments.



## B.1 Connecting OD-VLG Fall Arrest Device to the lifeline system

Connecting to the vertical lifeline system wire, press the locking lever (Fig. 1.2) and while keeping it pressed down as necessary, rotate the locking cam until it is fully opened (Fig. 1.3 - 1.4). Place OD-VLG on the cable making sure it is in the correct direction (Fig. 1.4), and then release the locking cam and the locking lever so as to prevent the cable from coming out of OD-VLG (Fig. 1.5). To remove OD-VLG from the cable hold the locking lever and open the locking cam as indicated below ( Fig. 1.9-1.10-1.11).



**Warning:** The connection and the disconnection from the anchor line should be carried out from a safe position or with the use of a separate individual system against falls.

- **Oneway safety system.** OD-VLG is equipped with the oneway safety system which when OD-VLG is turned upside down, prevents the locking cam from opening, thus reducing the risk of the incorrect insertion on the cable.



**Warning:** Risk of death! OD-VLG only works in one direction. If it is installed incorrectly or in the wrong direction, the risk of death is present (Fig. 1.8).

- **Function test.** Slide the fall arrest device upwards, passing it via the connector to verify it slides freely (Fig. 1.6). Then pull OD-VLG quickly downwards, to verify that the fall arrester will immediately block on the cable (Fig. 1.7).

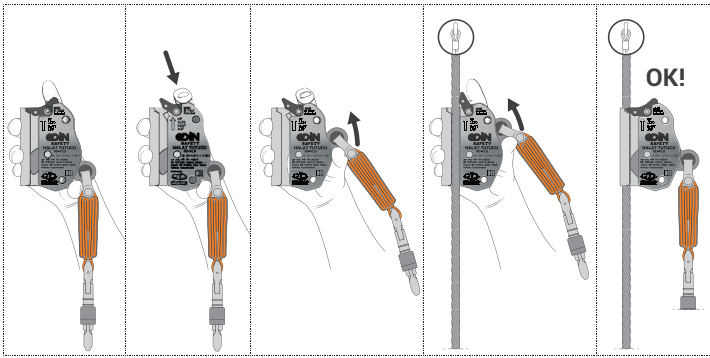


Figure1.1

Figure1.2

Figure1.3

Figure1.4

Figure1.5

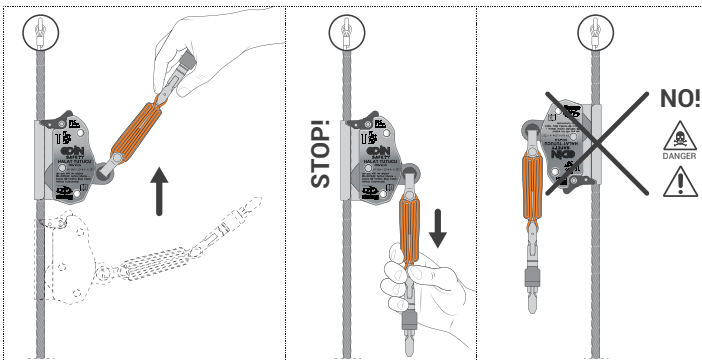


Figure1.6

Figure1.7

Figure1.8

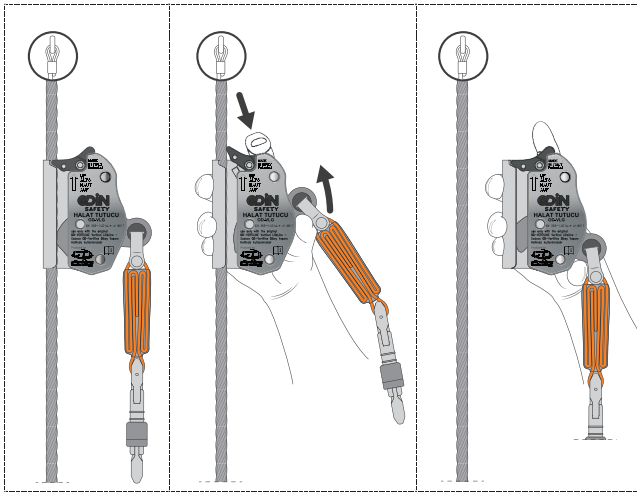


Figure1.9

Figure1.10

Figure1.11



**Warning:** Your OD-VLG Fall Arrest Device is a personal equipment and you should remove it from the line after each use.



**Warning:** Your OD-VLG Fall Arrest Device may not work easily when the OD-VLG Fall Arrest Device is left on the line, due to the dirt, dust, etc in the environment.



**Warning:** Use only original OD-VLG Fall Arrest Device and carabiner tested and certified together with the system .

## B.2 Connecting The OD-VLG Fall Arrest Device to the Full - Body harness



Connect the terminal connector to the sternal attachment point of an EN 361 full body harness. Before use, adjust the harness so that it is perfectly snug to the user's body and it must not be loose.



**Warning:** The weight of the user, including tools and equipment, must not be greater than the maximum rated loads marked on OD-VLG.



**Warning:** The weight of the user, excluding tools and equipment, must not be less than the rated loads marked on OD-VLG.



**Warning:** In the event where the harness loosens during the ascent or the descent, it will have to be adjusted again from a safe position.



**Warning:** It is absolutely forbidden to lengthen or shorten the integrated lanyard, by adding or removing a connector for example. It is equally forbidden to replace the lanyard provided by the manufacture with another type of lanyard.

- » OD-VLG Fall Arrest Device should be used when working on the Vertical Lifeline.
- » OD-VLG Fall Arrest Device must be used with original carabiner by connecting CE certified Full body harness conform to standard EN 361 equipped with a front fall arrest attachment point including a clear statement on the required position of the harness attachment point.
- » Your full -body harness should be adjusted according to your body, it should not be loose.
- » In case your full -body harness loosens during use (if it becomes looser for your size), you should adjust your belt in a suitable position according to your body.
- » OD-VLG Rope holder cannot be lengthened or shortened by adding any material, the OD-VLG Fall Arrest Device should only be used with the original shock absorber and carabiners.

### B.3 Ascent and Descent with OD-VLG Fall Arrest Device

OD-VLG enables the ascent or descent of a rigid anchor line in complete safety (Fig. 1.1) and without the users intervention. In case of a fall, the system instantly blocks. During the ascent pay attention to not solicit the cable with a rearward horizontal load because this could delay the locking cam, increasing the braking distance of the fall and potentially exposing the user to serious consequences (Fig. 1.2).



**Warning:** The engagement of the release function of the handling of OD-VLG during the ascent or the descent could prevent the safe operation of the braking mechanism and should only be performed from a safe position where there is no risk of falling.



**Warning:** Do not use OD-VLG for positioning at work (Fig. 1.3), but if required, use an addition separate system (Fig. 1.4).



**Warning:** After having extracted and reinserted the metal cable inside any cable guides present, verify that the cable is correctly inserted inside them.



**Warning:** In case of damage to the cable guides, where present, they must be replaced immediately.



**Warning:** Do not use damaged cable guides.

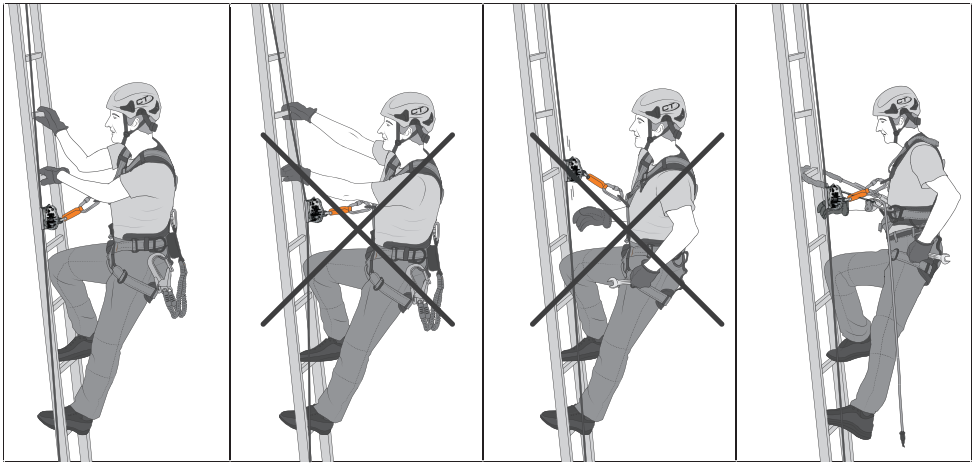


Figure-1.1

Figure-1.2

Figure-1.3

Figure-1.4

- » OD-VLG Fall Arrest Device should always be below chest level when climbing up. For the convenience of the user, two hands should be climbed with one foot or one hand with two feet while climbing.
- » Climb within your abilities. Long climbs may require some resting stops. Avoid getting tired on the ups and downs.
- » Avoid climbing in strong winds and unsuitable weather conditions.
- » Use regular landing techniques for landing.
- » Release the OD-VLG Fall Arrest Device so that the user can go down.
- » Descent out of position causes the rope holder to lock (overbending backward), after some upward movement to release it, the descent can be continued. After the climb is complete and the user has landed in a safe place, disconnect your full-body harness from the OD-VLG Fall Arrest Device and remove the wire rope holder from the system.



**Warning:** Engaging OD-VLG release function or handling OD-VLG during ascent or descent could hinder the safe operation of the braking mechanism and should be done only from a safe position where there is no risk of a fall.



**Warning:** Connection and disconnection from the rigid anchor line shall be done from a safe place or by using a separate personal fall protection system.



**Warning:** Every user can be influenced and fall due to the movement of the line initiated by the other user.



## B.4 Safe Open Drop Height

The fall clearance distance is the minimum distance needed under the feet of the operator in order to avoid the collision with the structure, the ground, or other obstacles, in case of a fall from a height.

» The height between the user's feet and the floor or surfaces where there is a risk of impact during a fall should be at least 2 meters. (Figure 1).



Figure-1

» Before each use, make sure that there is a safe open fall height below the user so that you do not crash into the ground or other obstacles after a fall. The user must be very careful not to hit the ground for the first 2 meters or to risk a fall while ascending or descending the system.



**Warning:** Should the user be below the indicated fall clearance distance height, it might happen that he's not protected from falls: therefore it is suggested to adopt supplementary measures during the climbing or the descent.

## B.5 Resting at a certain distance on the line

- » OD-VLG Fall Arrest Device should not be used for positioning purposes. If it is necessary to position or rest on the line, appropriate equipment should be used. (Example: WPL Positioning Lanyard) When connecting or exiting the line, you should be in a safe environment and appropriate safety should be taken with separate personal protective equipment.
- » To rescue the suspended personnel in a possible rescue operation, second personnel can enter the line and perform the rescue operation.

## C.

### Supplementary Information Regarding standard; EN365

#### C1. Rescue Plan

It is compulsory to prepare an emergency rescue plan for any accident that the employee has experienced during the use of the product and rescue plans must be put in place to solve any emergencies that may arise during work execution.

#### C2. Anchor Point

Anchorage to which personal fall arrest equipment is attached should always be placed above the position of the user and shall be capable of supporting 12 kN (EN 795) per employee attached.

#### C3. Various Situations

- » A fall arrest harness must be used once to protect the working personnel during the fall.
- » In the Fall Arrest system, safe fall distance must be measured before each use to prevent the user from hitting the ground or other surfaces in the fall situation.
- » A dangerous situation may be raised when more than one product is used together so the safety function of the equipment should not affect each other.

## D. Product Control and Validation

#### D1. Before Every Usage

OD-VERTILINE's all componets including OD-VLG (fall arrest device) must be checked regularly before and after each use, and findings must be recorded and verify that the lifeline is intact and in adequate conditions; there are no lacerations of the seams in the initial area of the absorber due to the arrest of a fall; the protective absorber sheath is present and in a condition as to allow the inspection of the webbing below; the carabiner inserted into the hole of the locking cam can rotate without any external impediments; the mobile body of the oneway system can move freely (see section B.1).



**Warning:** Do not use neither the rigid anchor line nor the fall arrester device for carrying out rescue manoeuvres, in that case an appropriate additional system must be employed. During each use: always verify the correct placement of the cable inside the device; pay attention using iced or dirty cables and any foreign body which might prevent the good working of the locking cam on the cable.

Check the product according to the following criteria;

- » All components must be free of corrosion, chemical attack, alteration, excessive heating or wear.
- » All components shall be free of cracks, sharp edges, deformation, corrosion, or any evidence of defect or damage.
- » The wire rope must be inspected for kinks, broken strands, corrosion, abrasion, other signs of wear and damage.

If one of the above items is seen, the vertical lifeline system must be withdrawn from use immediately, not used, and the manufacturer must be informed about it.





## ODİN SAFETY General Information

### E1. Product Life

Metallic materials do not have a theoretical lifetime. The product must be checked periodically at least once a year and it must be documented whether it is safe to use or not. ODİN SAFETY is not responsible for the use of the product that do not have annual periodic control.

- » OD-VERTILINE ( Vertical Lifeline System) is made of stainless steel, aluminum materials.
- » The materials are highly resistant to atmospheric corrosion.
- » Superficial rust stains can be seen on the product depending on the area of use (industrial areas; iron dust and chemicals in shorter times. Areas close to the sea; salt in the air). These superficial stains can be removed with an appropriate maintenance program.
- » The suitability of the system for use is given only one circumstance that the annual periodic controls are carried out and resulted positive by the manufacturer or persons Authorized by the manufacturer.
- » Regular periodic examinations and the safety of users depend upon the continued efficiency and durability of the product.
- » The product must be withdrawn from the service immediately and destroyed to prevent further usage in the following situations;
  - If there has been a drop in the system,
  - If corrosion is observed on the system components,
  - If the system was recorded not suitable for use during control and any doubt about it,
  - If there are changes in standards, laws, compliance with the usage technique, and similar cases,
  - If there is any doubt arise about its condition for safe use,
  - If it has been used to arrest a fall and not used again until confirmed in writing by a competent person it is acceptable to do,

### E2. Storage

The product is offered with its user guide and its model and standard written on it. The storage area of the product should be meet the following criteria;

- » The product must be kept away. abrasive chemicals (acids, solvents, etc.)
- » The product must be kept away from heat sources.

### E3. Transportation

OD-VERTILINE's all componets including OD-VLG Fall Arrest Device must be transported in a bag to keep it away from moisture, chemicals, and sharp edges and also to protect it from contact with other objects.

### E4. Product Care

Taking good care of the product after each use extends the life of the product. Use metal cleaners to clean the product. For more information, please contact us at [info@odinsafety.com.tr](mailto:info@odinsafety.com.tr).



**Warning:** When the equipment becomes wet, either from being in use or when due to cleaning, it shall be allowed to dry naturally and shall be kept away from direct heat.

### E5. Changes & Repair

Modifications (repairs or additions, changing a part) are strictly forbidden without the written permission of Odin Safety.

- » Any repairs on the product are carried out only by the manufacturer (Odin Safety) or the manufacturer's authorized persons.
- » Odin Safety is not responsible for the dangers that may arise if the repair and maintenance are carried out by unauthorized persons.
- » The product information of usage, maintenance, and repair can be obtained from the authorized distributor in the official language of the country where the product is in service.

## E6. Periodical Inspection

Before each use of your product or in certain periods, products must be checked at least once a year by the manufacturer or by a competent person authorized by the manufacturer. These control and maintenance dates should be written on the warning label.

The safety of users depends upon the continued efficiency and durability of the equipment. Check the legibility of the product markings and the warning label.

During the inspection of the system, the following information should be recorded; Type of the product, model, contact information of producer, serial number, date of production, date of purchase, date of first use, next inspection date, problems, recommendations, name and surname of the inspector.

For detailed information, visit [www.odinsafety.com.tr](http://www.odinsafety.com.tr)

## E7. Warranty

This product is guaranteed for 10 years against all kinds of material and manufacturing defects under proper usage and storage conditions. The warranty is not valid in the following cases;

- » Use in wrong areas,
- » Product is misused, torn, cut, corroded, damaged by accidents
- » Periodic controls are done by unauthorized persons.
- » Repair and Maintenance are done by unauthorized persons.
- » Decline
- » Failure to comply with storage conditions

## F. Certification

Modul B and Modul C2 were performed by QUINTIN CERTIFICATION NB 2927.



QUINTIN CERTIFICATIONS  
825 route de Romans  
38160 Saint Antoine l'Abbaye  
France  
[info@quintincertifications.fr](mailto:info@quintincertifications.fr)

You can find the EU declaration of the PPE regulation 2016/425 on our website ([www.odinsafety.com.tr](http://www.odinsafety.com.tr))



**Warning:** Please read the usage instructions carefully before using them. The user manual must be published in its language in each country.



**Warning:** It is essential for the safety of the user that if the product is re-sold outside the original country of destination the reseller shall provide instructions for use, for maintenance, for periodic examination, and for repair in the language of the country in which the product is to be used.





**Odin Safety Endüstriyel Ürünler Anonim Şirketi**  
Merkez Ofis: Merkez Mahallesi Hasat Sokak No:52/1 Şişli/İSTANBUL  
Üretim/Depo: Tatlıkuyu Mah. 1302/3 Sokak No:23/B Gebze/ KOCAELİ

+90 (212) 963 16 41  
info@odinsafety.com.tr  
www.odinsafety.com.tr  
www.odinisguvenligi.com

